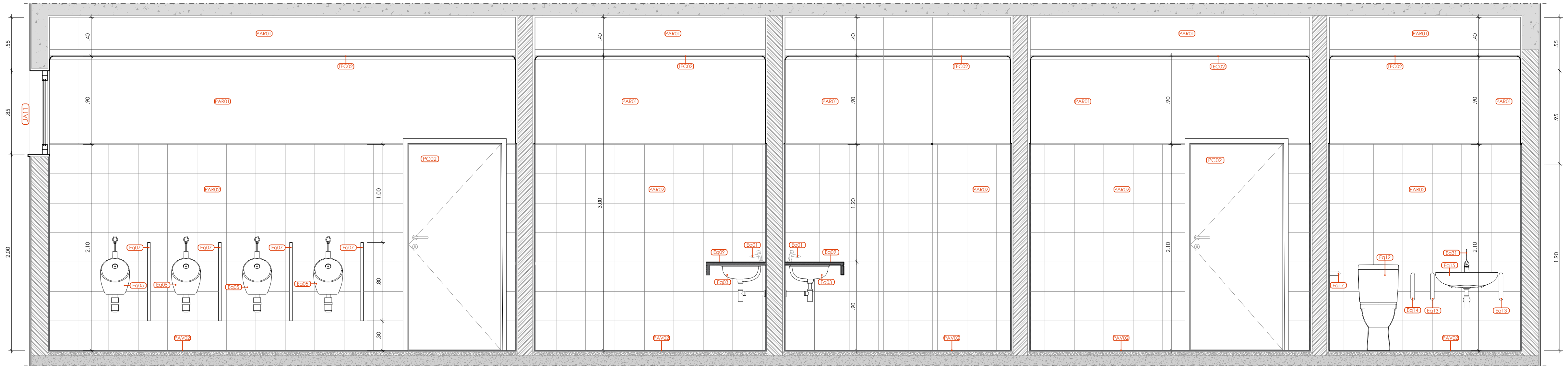
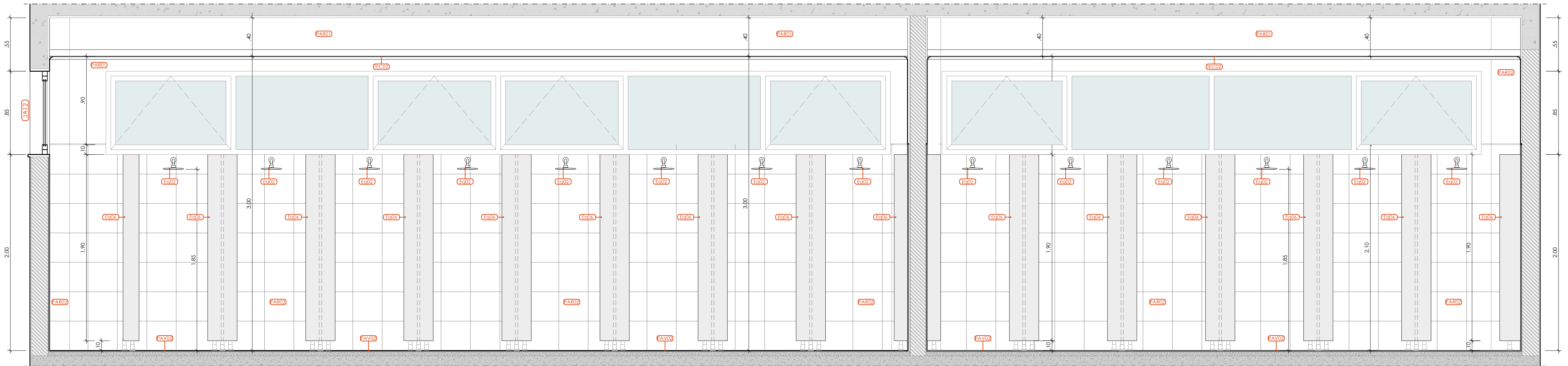


SECTION A - A'
SCALE: 1/25



SECTION B - B'
SCALE: 1/25



SECTION C - C'
SCALE: 1/25

EQUIPMENT LEGEND

Eq01 - Washbasin tap.
Eq02 - Shower.
Eq03 - White ceramic washbasin.
Eq04 - White ceramic toilet.
Eq05 - White ceramic urinal.
Eq06 - Phenolic panels with 12mm thickness in Grey 0741.
Eq07 - Phenolic panels urinal divider.

Eq08 - Mirror.
Eq09 - Plastic lockers.
Eq10 - Stainless steel sink.
Eq11 - Integrated finish cabinet and door panel, with medium density fiberboard as principal material, premium baking varnish board as surface veneer.
Eq12 - Toilet for PMR sanitary installations.
Eq13 - Stainless steel support bar for PMR toilets.
Eq14 - Stainless steel support bar for PMR toilets.
Eq15 - Ceramic washbasin for PMR sanitary facilities.

Eq17 - Stainless steel support bar for PMR toilets.
Eq18 - Plastic lockers.
Eq19 - Integrated finish cabinet and door panel, with medium density fiberboard as principal material, premium baking varnish board as surface veneer.
Eq20 - Integrated cabinet countertop, with medium density fiberboard as principal material, PVC applied as surface veneer.
Eq21 - Stainless steel dishwasher with 2 bowls.

Eq22 - Space-saving siphon for 2 sinks.
Eq23 - Toilet roll holder with lid.
Eq24 - Tap brush and floor-mounted toilet brush holder.
Eq25 - St. stainless steel trash can with lid.
Eq26 - Dishwasher.
Eq27 - Refrigerator with integrated freezer compartment.

Eq28 - Liquid soap dispenser.
Eq29 - Paper towel dispenser.
Eq30 - Automatic hand dryer in stainless steel.
Eq31 - PMR bathroom mirror.
Eq32 - Tap for PMR washbasins.
Eq33 - Microwave.

MATERIALS LEGEND

PAV 01 - 10mm thick porcelain tiles.
PAV 02 - Anti-slip porcelain tiles, 10mm thick.
PAV 03 - 10mm-thick porcelain tile laid in a 20mm
PAV 04 - 10 mm thick ceramic tile
PAV 05 - Anti-slip tiles 12 mm thick
PAV 06 - Anti-slip ceramic tiles 12 mm thick
PAV 07 - Interior floor in reinforced concrete with AQ50 mesh with a smooth finish, honed with a spoon/palustrade shore.
RDP01 - Veneered ceramic skirting 5 mm thick.

LEGEND FOR WALLS AND COVERINGS

PAR 01 - Painted interior wall, to be plastered on two sides, 1:2 cement mortar 6 mm thick, well plastered, 1:3 cement mortar 9 mm thick. Base wall (to be painted white, special interfacial agent, one coat).
PAR 02 - Interior wall clad with 10 mm thick tiles, applied on white 1:1 cement mortar with 4 mm thickness and 20% water content, (a cement paste bonding layer). Waterproof polymer cement coating 1.5 mm thick along the entire length, 9mm thick 1:3 cement mortar well compacted and plastered to be painted white with a special interfacial agent.
PAR 03 - Exterior wall painted white special interfacial agent.
PAR 04 - Exterior wall painted with a special interfacial agent.

CEILING LEGEND

TEC 01 - Interior false ceiling in 12 mm thick ornamental plasterboard with self-tapping screws, opening filled with light steel beams (double layer), intervals between the main beams equal to 900-1000mm, intervals between the smaller beams equal to 600mm, intervals between the cross beams equal to 600mm.
Reserve in the lower part of the frame Ø8 suspension bars, with an average bidirectional spacing of 900-1200

TEC 02 - Interior false ceiling in 2.5 mm thick aluminum alloy plate (PVC) fixed with self-tapping screws light steel beams (double layer); intervals between main beams equal to 900-1000mm, intervals between smaller beams equal to 600mm, intervals between transverse beams equal to 600mm reserve at the bottom of the frame 8 suspension bars, with an average bidirectional interval of 900-1200.

TEC 03 - Painting of ceiling plastered with 1:3 cement mortar, 5mm thick, fanned finish (slab moulded in situ).

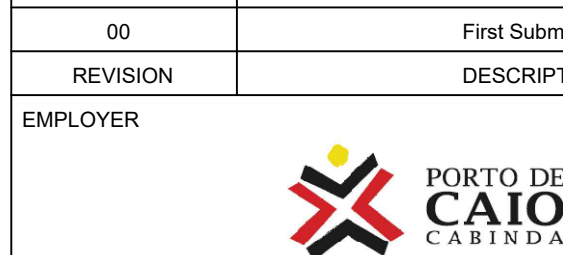
STONERWORK LEGEND

SOL 01 - Floor made of 1:2.5 cement mortar, 20 mm thick, well bonded and finished, cement mortar connecting one layer to the other, c12/15 concrete, 100 mm thick, simple soil compaction, 4% slope outwards.

PEI 01 - Sill made of 1:2.5 cement mortar, 20 mm thick, well bonded and finished, cement mortar connecting one layer to the other, c12/15 concrete, 100 mm thick, simple soil compaction and 4% outward slope.

Engineer Approval Codes

Code Nr	Condition	Signature Employer's Representative	Date
Code 1			
Code 2			
Code 3			



Caioporto S.A.
Avenida Comandante Gikla n° 150
CP 1276 Sagrada Família
Luanda, Angola

EMPLOYER'S REPRESENTATIVE/ENGINEER



Sellhorn Ingenieurgesellschaft mbH
Tiefeld 5, D-20459 Hamburg, Germany
Tel: +49 (40) 36 12 01-0
Fax: +49 (40) 36 12 01-28
E-Mail: info@sellhorn-hamburg.de
www.sellhorn-hamburg.de

CONSULTANT



Sellhorn Ingenieurgesellschaft mbH
Tiefeld 5, D-20459 Hamburg, Germany
Tel: +49 (40) 36 12 01-0
Fax: +49 (40) 36 12 01-28
E-Mail: info@sellhorn-hamburg.de
www.sellhorn-hamburg.de

CONTRACTOR



China Road and Bridge Corporation
R. Femenio Mendes Pinto 55
Alvalade, Luanda, Angola
Fax: +244 22 232 7003
http://www.crbc.com

PROJECT

The Project of the New Port of Caio in Cabinda

DRAWING TITLE

1015 One Stop Building
Detail Zone 02_Sections AA', BB', CC' - 2/3

	DESIGNED BY	DRAWN BY	CHECKED BY	SCALE	DRAWING N°
DATE	20/01/2025	/ /2025	/ /2025	1:25	01.21
NAME					
DESIGN STAGE	FINAL DESIGN				